



SO STOBO

Scotland's only destination spa

---

# CONTENTS

---

WELCOME	3	CHRISTMAS AT THE CASTLE	28
ACCOMMODATION	4	SO HOGMANAY	31
THE CASHMERE SUITE	6	SO STOBO WELCOME PACKS	33
EATING WELL AT STOBO	8	PHYTOMER COLLABORATION	34
THE COCKTAIL LOUNGE	11	SPA TREATMENT ADVICE	36
RELAX AND INDULGE	12	CONTRA INDICATIONS	37
THE COURTYARD BOUTIQUE	12	FACE & EYE TREATMENTS	39
GUEST FACILITIES	14	BODY TREATMENTS	40
USEFUL INFORMATION	19	FACE & BODY RITUALS	43
SPA PACKAGES & TREATMENTS	22	HOLISTIC TREATMENTS	44
THE REVITALISING SPA BREAK	24	MADE FOR LIFE	47
THE BLISSFUL SPA BREAK	24	MANICURES & PEDICURES	48
THE SIGNATURE SPA RETREAT	25	MILK GELATION	49
THE ULTIMATE SPA RETREAT	25	SO STOBO SO FIT	50
THE EVENING ESCAPE & SPA DAYS	26	TERMS & CONDITIONS	53





# WELCOME

Nestled among the beautiful Scottish Borders countryside, the magnificent Stobo Castle is the ultimate escape where one can indulge in a luxurious haven, unwind and enjoy some of the finest hospitality that Scotland has to offer.

From the sweeping driveway when one enters the grounds, guests are enveloped into an environment of unrivalled luxury, serenity and calmness.

Melt away the stresses of everyday life in Scotland's only destination spa – whatever your body desires, there are customised spa treatments available to detoxify, smooth and revitalise as the mood takes you.

Stobo Castle combines state of the art spa facilities with first class service and adds a special touch to make Stobo your very own personal sanctuary.



---

## ACCOMMODATION

---

Your time is completely your own at Stobo – spend as much or as little as you wish relaxing in your stylish bedroom. Rooms vary in size and shape and the personality of each is unique, but all are rich and elegant with the perfect ambience to make one feel comfortable, and often with superb views over peaceful countryside. Each room features en-suite bath/shower rooms, tea and coffee making facilities, television, radio and telephone. A hairdryer, slippers, bottled water and luxury toiletries are provided for your convenience, plus a fluffy So Stobo bathrobe for the duration of your visit. Bedrooms are not air-conditioned, however fans are provided and rooms are serviced on a daily basis.

### SINGLE ROOMS

For those who are joining us alone or prefer separate accommodation, our two smaller single rooms, located on the first and second floors, provide a private space to relax in peace.

No single supplement applies on these rooms.

### CASTLE LODGE

Castle Lodge is just a 200 yard outside walk from the main castle and the contemporary style accommodation sleeps a maximum of 24 guests in 8 twin (each with two double beds) and 4 double rooms (each with a king-sized bed).

Please note that there is no private lounge in this lodge.



## CLASSIC & SUPERIOR ROOMS

Each Classic and Superior room offers comfortable accommodation with single and twin/double-bedded rooms on all four floors of the main castle and the first floor of the spa courtyard.

Superior rooms have GHD hairdryers and the twin rooms each have two double or king-sized beds.

## DELUXE & DELUXE WITH TERRACE ROOMS

Choose from one of our luxurious, deluxe rooms and enjoy spacious surroundings and stunning décor. Each has two double or king-sized beds for added comfort.

British perfume house Penhaligons luxury toiletries are available for guests' use in the bathrooms in their signature scent "Halfeti", an intoxicating, mysterious fragrance with vigorous grapefruit, creamy jasmine, Levantine spice and rose, suitable for all genders.

Little extras include a box of Walkers shortbread and the use of a Dyson hairdryer. For something hot, we offer a selection of Pekoe Tea including the bespoke "So Stobo" Sleep flavour and Nespresso coffee, with crockery from the Villeroy & Boch range.

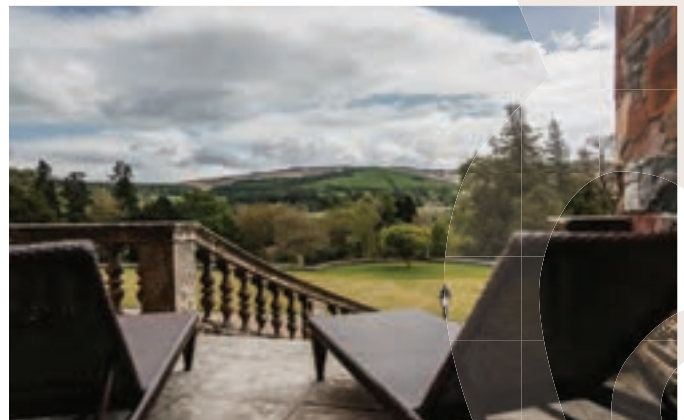
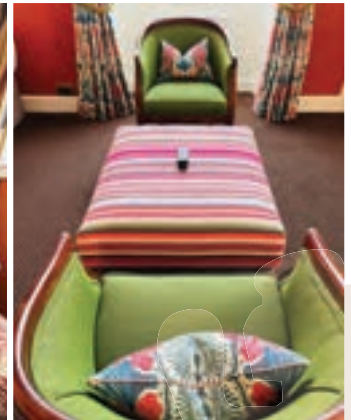
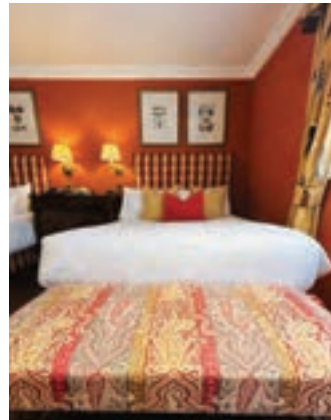
In the "Murray" and "Philipson" rooms, French doors open onto a terrace, inviting you to enjoy the beautifully landscaped gardens and Scottish countryside beyond from the comfort of rattan loungers.

## PARK LODGE

Park Lodge is a self-contained, secluded environment linked to the castle providing sumptuous accommodation for up to 12 guests. Surrounded by its own mature gardens, Park Lodge offers a private retreat for groups wishing to spend time together, whether that's catching up with friends or family, celebrating a special occasion or a corporate event.

The "Superior" graded accommodation is available in two spacious triple rooms (each with two double beds and a single day bed) and three twin-bedded rooms, each with two double beds, and there is also a comfortable sitting room with French doors opening out onto a delightful terrace.

\* If groups require sole occupancy of either lodge, please book early.







---

# THE CASHMERE SUITE

---

The most opulent suite in the land, where cashmere and unadulterated luxury personifies a new concept in guest accommodation. We believe your stay in The Cashmere Suite should be extra special and have therefore included the following small gifts which will await your arrival:

-  A complimentary bottle of Bollinger champagne
-  Two boxes of Penhaligon's luxury products to take home
-  A box of Walkers butter shortbread
-  Fresh fruit and chocolates

The perfect setting for a romantic getaway, The Cashmere Suite is the destination of choice for honeymoon couples and anniversary celebrations alike.

## THE BEDROOM

The bedroom walls are dressed in rich claret coloured cashmere, sourced from Holland & Sherry in Peebles. Integrated plasma screen televisions are placed at the bottom of two cashmere covered 7 x 5 ft beds from Italy which are hand painted and detailed to reflect the design of the silk curtains in the living room. A discreet dressing room is entered via the bedroom, panelled in the American Black Walnut finishing that is the theme throughout the suite.

## THE BATHROOM

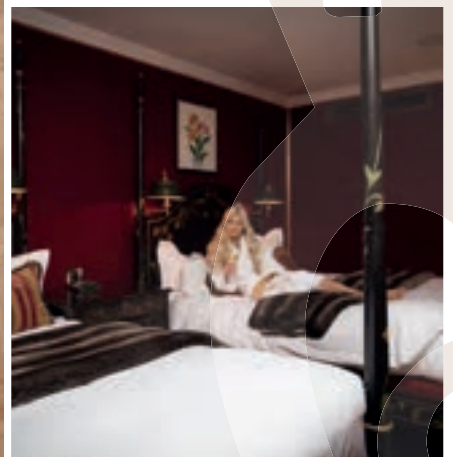
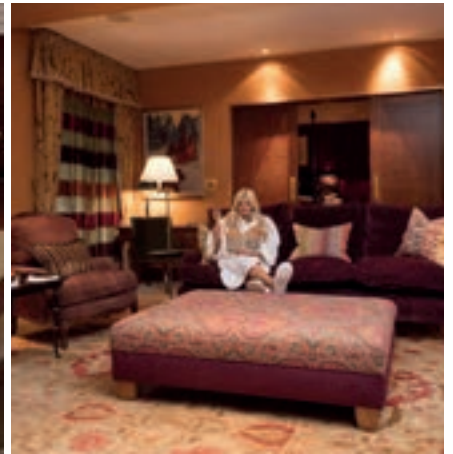
The bathroom within The Cashmere Suite is a true haven in itself. Handcrafted from one piece of limestone and weighing over a ton, is a breathtaking cream bath, which is the focal point of the room. Amber and aubergine up-lighters illuminate the room and complement the colour scheme. With under-floor heating and an integrated flat screen television, no detail has been excluded. Luxury bathing products and the softest of towels complete the sensual indulgence of this suite.

## THE LOUNGE

An abundance of silk complements the cashmere in the lounge with the most superior lighting technology available on the market place. The floor boasts a truly stunning Zeigler rug that embraces all the colours of the suite and covers most of the room. On the walls hang paintings by Scottish based artist Deirdre Edwards - taken from her exhibition in the Scottish Gallery. The artwork, which features portraits set in a Chinese landscape, exhibits a style that is felt to be a break away from the traditional Scottish landscapes which one expects in such situations.

## THE PRIVATE TERRACE

After you've explored the interior, step through the French doors to take in the stunning views from the private terrace - the perfect location for al fresco dining or relaxing on the comfortable loungers.



---

# EATING WELL AT STOBO

---

Good food is essential to well-being and at Stobo Castle, we offer variety and choice to tempt every palate. And in case you were wondering, decadent desserts are on the menu, as are champagne, cocktails and fine wine.

## STOBO CUISINE

Our Executive Head Chef Stephen King and his team create seasonal dishes using the finest produce Scotland has to offer. To complement this, Stephen has introduced a daily specials board with choices to satisfy every appetite.

Breakfast, lunch and dinner are included in all residential packages and vegan/vegetarian options are available, however if you have any specific dietary requirements, please advise us prior to arrival and we will be delighted to accommodate your requests.

## THE COURTYARD CAFÉ

The Courtyard Café features banquettes & comfortable seating, and décor using subtle lighting, smoked mirrors, plush fabrics and designer wallpapers. We have added breakfast items to the delicious menu, which also includes hot and cold beverages and a selection of snacks, cakes, traybakes and tarts. For something more substantial, sandwiches freshly prepared by our chefs and warming soup are also available.

The Courtyard Café opening hours are from 8.30am to 8.00pm.









---

# THE COCKTAIL LOUNGE

---

## THE COCKTAIL LOUNGE

Take in breath-taking views of the pool and countryside beyond whilst sipping your choice from our menu of over 30 cocktails, featuring new and classic combinations of decadent flavours. Our dedicated gin menu is also proving very popular!

Palm trees, pineapple lamps and bamboo finishes combine to create a paradise-themed, relaxing space for all to enjoy.

The Cocktail Lounge is open from 3.00pm to 11.00pm.



---

# RELAX AND INDULGE YOURSELF

---

Venture into the Spa where you'll discover an unrivalled range of health and beauty treatments to cater for your every desire. Whichever you choose, you'll be in the safe hands of highly trained therapists who are there to make sure you get the most out of your stay with us.

Our in-house spa experts research and embrace the very latest in spa trends and technology to ensure we deliver the ultimate in luxurious treatment experiences. Take a moment to disconnect from the stresses of daily life and allow yourself to be truly relaxed and rejuvenated.

Once your treatment is complete, a visit to The Relaxation Suite is the perfect end to your pampering journey.

---

## THE COURTYARD BOUTIQUE

---

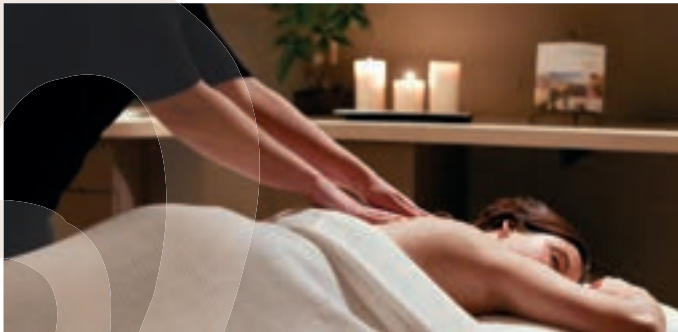
Continue the Stobo experience in the comfort of your own home with purchases from our luxury boutique.

You'll find everything you need for a complete pamper session including beautifully scented and highly effective skin, body and hair care, plus candles and diffusers to create a relaxing atmosphere.

Before you leave, treat yourself or someone you love to a Stobo souvenir, chosen from our impressive choice of branded goods, bespoke jewellery and seasonal gifts. Our elegant, lambswool wraps feature the exclusive "So Stobo" tartan, commissioned, produced and registered to celebrate our 40th anniversary as Scotland's only destination spa.

For online shopping, please visit [stobocastle.co.uk](http://stobocastle.co.uk)

For mail order, please call 01721 72 50.





---

# GUEST FACILITIES

---

## POOL

The 25m UV treated swimming pool offers panoramic views across the Borders countryside. Guests can choose to swim at their leisure or take part in our daily Aquafit class. Poolside loungers are also available.

## LACONIUM

A gentle, heated bath at a temperature of 65° and humidity of 15-20% to purify and detoxify the body. A dry, relaxing environment allowing your body to heat before you refresh yourself with the ice fountain making your skin tingle and feel refreshed (ladies only).

## CRYSTAL STEAM ROOM

Crystal can help overcome a variety of imbalances and illnesses. As the body gently heats up, the blood circulation is stimulated to detoxify and purify. This strengthens our immune system and helps overcome anxiety. The temperature in this cabin reaches 45° and the humidity amounts to 90-100% (ladies only).

## AROMATIC STEAM ROOM

As the room heats up to a temperature of 45° and humidity of 90-100%, blood circulation is gently stimulated. This is a deeply purifying and detoxifying process. As you inhale deeply, the steam blended with fresh aroma of essence will start you perspiring. 15 to 20 minutes is the ideal length of time followed by a refreshing shower and a 20 to 30 minute rest (ladies only).

## THE EXPERIENCE SHOWER

A unique shower treatment with 3 settings to complement your spa experience. Choose from 'Tropic', in which you surrender yourself to tropical rain, surrounded in huge droplets with a warm glow to enhance and stimulate the circulation, 'Rain' which is a refreshing shower to stimulate and tone the body and 'Head' which is the classic option with soothing warm water to cleanse and revitalise.

## HYDROSPA

Stobo has one of the most advanced hydros spas of its kind. At one end there is an Airlounger designed to give an air massage along the full length of your body, in the middle, an airpad supplies millions of bubbles to give an invigorating and refreshing standing massage and two giant water fountains deliver an excellent neck and shoulder massage.







## MIXED STEAM ROOM

The Mixed Steam Room enjoys stunning views of the pool and landscaped gardens beyond. Piped music adds to the serene ambiance.

## MIXED SAUNA

Our glass-fronted Swedish Sauna is located in the lobby of the pool area, providing traditional dry heat for both ladies and gentlemen, with remarkable views onto the swimming pool.

## RELAXATION SUITE

Our dedicated Relaxation Suite is available for all our guests and members to use, with comfortable loungers and peaceful music - a serene environment in which to simply chill out and be calm, or to rest following a treatment.

## OUTDOOR HOT TUBS

Our three outdoor hot tubs, upgraded to the latest, state-of-the-art models in 2023, feature seating for 18 people to enjoy a soothing water jet massage, whilst admiring the stunning landscaped gardens and countryside beyond. We recommend no longer than 15-20 minutes per session.

## TENNIS COURT

What better way to enjoy Stobo's stunning location than an invigorating tennis match on our court situated at the front of the castle surrounded by rolling hills and beautiful landscape.

## JAPANESE WATER GARDENS

There's something indescribably magical about a Scottish castle, perched on a hill amongst rolling grounds, shaded by trees and set around a picturesque loch.

Relax in our beautiful grounds or take a loch-side walk to restore a sense of balance with nature, in a world where such simple pleasures are too often overlooked.

Close by the castle lie the magnificent Japanese Water Gardens. Stand by the waterfall or amidst the gently bubbling pools, specially designed to promote a Zen-like calm. Water from the Stobo Loch tumbles down a cascading waterfall and delightful little bridges take you over peaceful streams whilst lush plant life and classic Oriental landscaping combine to create an overwhelming sense of peace.

Sometimes the greatest boost of all comes from breathing fresh country air and feeling the wind in your hair. We offer the latest in beauty treatments but the stunning Peeblesshire countryside comes free, as an integral part of the package.







---

# USEFUL INFORMATION


---

## HATS INCLUDED IN EVERY PACKAGE:





-  Unlimited use of the spa facilities, including the 25m UV swimming pool, hydrospace, gym, Relaxation Suite, sauna & steam rooms, experience shower, outdoor hot tubs, and the tennis court during the hours as described for your chosen package.
-  An extensive range of optional fitness, relaxation and aqua classes.
-  Guided country walks and exclusive access to The Japanese Water Gardens.
-  Complimentary So Stobo slippers and use of bathrobes & towels.

## ALL RESIDENTIAL PACKAGES INCLUDE:

-  A warm welcome - your luxurious accommodation is available from 3.00pm however you may wish to join us for a light lunch served in The Courtyard Café from 2.00pm. Any queries will be answered throughout our swift check in process.
-  Stobo cuisine - all meals from dinner on arrival to lunch on departure are included and we now have a booking system to ensure a relaxed and comfortable dining experience. Leaders of large groups are encouraged to advise us of their preferred dining times prior to arrival.
-  Spa treatments as per your chosen package - these may commence from 3.30pm on your day of arrival so please kindly advise us if you intend to arrive after this time.

-  A fond farewell - on your day of departure, please settle your account between the hours of 9.00am and 11.00am and we kindly ask you to vacate your room and return your keycards to Reception by 12 noon on the day of departure.

## ALL SPA DAY PACKAGES INCLUDE:

-  A warm welcome and overview of your day with a member of our friendly team.
-  A delicious two course lunch (main course and dessert)
-  Spa treatments as per your chosen package.
-  A fond farewell - please settle any outstanding items at Spa Reception prior to departure.

## HAT TO BRING

We have a very informal dress code at Stobo. Most of our guests choose to relax in our classic, white bathrobes throughout the day, however we do request that guests dress for dinner. Suitable clothing must be worn in the gym and exercise studio and swimwear is required for the wet facilities.

Our guided walks take place in all weathers and suitable footwear and outdoor clothing should be worn.

As part of our quest to become a greener Spa, we would kindly ask you to bring a re-usable water bottle with you.

## GIFT VOUCHERS THE PERFECT PRESENT

When it comes to choosing the ultimate present, a voucher for a spa experience will be received with joy. Indulge your loved one with the gift of relaxation - a Stobo Castle gift voucher.

Leave the choice to them with monetary vouchers from £50 or give a specific experience with an Evening Escape, Spa Day or Residential voucher.

Treat someone who deserves to be pampered. . . . give them a Stobo Castle gift voucher. Ordering is quick and easy by calling **01721 725300** or visitin **.stobocastle.co.uk** and your voucher will be sent to an email or postal address of your choice.

## INTERNET ACCESS

Free wireless internet access is available in all areas of the castle, including guest bedrooms.

## MOBILE PHONE POLICY

To maintain a peaceful atmosphere here at Stobo Castle, please switch your mobile phone to silent and do not use to make or take calls in public areas. If you wish to use your mobile or any other device to take photographs, please ensure there are no other guests in any of your images.

## GRATUITIES

We believe that all our staff, including those behind the scenes, contribute to the service we provide and therefore gratuities are distributed evenly and in full. For ease of payment of gratuities, all accounts will be subject to an optional charge of 5% based on room fees and additional treatments only and is capped at £25 - this may be removed or amended upon request.

## DISABLED ACCESS

We welcome people with all disabilities and, as with all of our guests, will strive to ensure their comfort and wellbeing during their stay.

We would be delighted to hear from you if you have any particular requirements regarding your room, treatments or dining experience - our team are always available to help you make the most of your time with us.

Given the castle's age and listed status, it is unfortunately not possible to make the alterations necessary to create fully disabled access throughout the building and please note that our staff are not medically trained and are unable to provide one-to-one assistance.

T S C 14.

A

11.00 .





# SPA PACKAGES & TREATMENTS 2024





Our package rates vary throughout the year, so contact us to take advantage of our special offers. To book, please contact our reservations team on 01721 725300.

---

# THE REVITALISING SPA BREAK

---

A truly rejuvenating package, allowing time to fully immerse yourself in our extensive spa facilities and enjoy all that Stobo has to offer.

If spa treatments are desired, we would recommend no more than one appointment if you are staying for just one night to ensure a relaxed itinerary. Please advise us of your preference at the time of booking as appointments are subject to availability.

---

# THE BLISSFUL SPA BREAK

---

and one of the following 55 minute treatments.



15 minutes LN P 14 sd ♿

Be massaged with approx. 2,000 litres of warm water, without getting wet!

or upgrade this to:



40 minutes (£35 Supplement) LN FC b2 sd 👁 a

A highly effective facial, tailored to each skin type for flawless and radiant skin.

or:



Salt Crystal Exfoliation

40 minutes (£35 Supplement)

sd ♥ P12 FC BP LN D E a

A full body exfoliation with sea salt crystals, combined with a relaxing application of body milk that leaves your skin soft and silky.

and one of the following 55 minute treatments



in tes LN FC ♥ BP sd a P12

Enjoy a de-stressing focus massage, incorporating shiatsu points to the feet, and a luxurious, warm hair mask with scalp massage.



in tes P ♥ LN sd BP D a E FC

This blissful treatment includes an exfoliation and a luxuriously warm application of paraffin wax on the back area to soften skin and relieve tense muscles. The ritual is then completed with a lower leg, back and neck massage.



Radiance Boosting Facial

in tes a sd FC b2 LN 👁

Phytomer's newest skincare line continues their commitment to preserving and protecting both the skin and the sea. Its organic Cyfolia algae, native to Brittany, leaves skin radiant and glowing once more.



---

# THE SIGNATURE SPA RETREAT

---

Escape to Stobo and enjoy our 2 night spa break focusing on the truly decadent Marine Radiance Ritual:



85 minutes **a E sd ♥ D P12 FC b2 LN BP 👁 T S**

Feel the rejuvenating benefits of the sea with this decadent, remineralising face and body ritual. Commencing with a soothing foot soak and exfoliation, you are then taken on a unique experience using our bespoke detoxifying, stress relieving back ritual. The Champagne of the Seas heated mud is then applied to your back and feet and whilst this is bubbling away, you are treated to a luxurious, brightening and revitalising facial.

*We understand some guests prefer treatments of a shorter length – if this is the case, the Marine Radiance Ritual may be substituted for any TWO 40 minute treatments from our menu.*

---

# THE ULTIMATE SPA RETREAT

---

The pinnacle of luxury spa breaks, our 2 night retreat will leave you truly pampered from head to toe and relaxed in mind, body and spirit. The following spa experiences are included:



85 minutes **a E sd ♥ D P12 FC LN BP T S**

This luxurious treatment includes everything you need to leave your body glowing and deeply relaxed. A full body sea salt exfoliation will leave your skin supple and smooth, followed by a calming ocean wave full body massage to wash away tension, completed with a marine thermal mud foot envelopment to reach the ultimate state of serenity

*And one of the following luxury facials:*



Comforting Soothing Treatment

ins **a sd FC b2 LN 👁**

A veil of softness for sensitive skin. This pampering treatment softens your skin and enhances its protection system for soothed and ideally hydrated skin.



Radiance Boosting Facial

in tes **a sd FC b2 LN 👁**

Phytomer's newest skincare line continues their commitment to preserving and protecting both the skin and the sea. Its organic Cyfolia algae, native to Brittany, leaves skin radiant and glowing once more.



Thirst Relief Facial with Organic Algae

ins **a sd FC b2 LN 👁**

This facial pairs high performance, organic, marine ingredients with a relaxing facial massage. It whisks us away to the seaside, thanks to its unique textures. The skin is hydrated, revitalised and more luminous than ever.

# THE EVENING ESCAPE AND SPA DAYS



£65 per person\*\*

Treat yourself to an evening of relaxation in Stobo's world class spa facilities. Take a dip in the 25m pool, hydrospa & outdoor hot tubs, try the different steam rooms in the Health Suite or maybe enjoy a workout in the gym. Refreshments are available to purchase from The Courtyard Café and The Cocktail Lounge.

You'll leave us feeling completely revitalised and ready to face the next day!

al om .00 m e a t u e .30 m.



£129 per person\*

Enjoy a relaxing experience that will leave you refreshed and invigorated. No treatments have been included - perfect for those who simply want to unwind, de-stress and enjoy everything that Stobo has to offer.

We understand everyone's schedules vary, so we've created two options for this package:

al om .00am e a t u e 5.00 m or  
al om 11.00am e a t u e 7.00 m

## ALL SPA DAY PACKAGES INCLUDE:

- A delicious two course lunch (main course & dessert)
- Use of the health suites and spa facilities
- An extensive range of optional fitness and aqua classes
- Guided walks and exclusive access to The Japanese Water Gardens

The Evening Escape, Simply Rejuvenating and Purely Pamper packages are suitable for those aged 14 and over, the So Tranquil package is suitable for those aged 16 and over.

A supplement of £20 applies on a Saturday & Sunday

\*\* A supplement of £10 applies on a Saturday & Sunday

## SO TRANQUIL SPA DAY

£189 per person\*

al om .00am e a t u e 5.00 m.

Choose of the following 40 minute treatments:



sd b2 LN P12

Relax into this tranquil treatment, combining the luxury of a stress-relieving back massage and facial massage.



sd E LN D

Relieves the anxiety that accumulates in the head, back and neck in everyday life.



sd ♥ P LN BP

An application of warm wax to the back, neck & shoulders to alleviate tension and relax muscles. After application, the client can fully relax with a de-stressing scalp and lower leg massage.



### Salt Crystal Exfoliation

a sd ♥ P12 FC BP LN D E

A full body exfoliation with sea salt crystals, combined with a relaxing application of body milk that leaves your skin soft and silky.



LN FC b2 sd 👁 a

A highly effective facial, tailored to each skin type for flawless and radiant skin.

Upgrade your inclusive 40 minute treatment to any 55 minute treatment for only £30.

## PURELY PAMPER SPA DAY

£289 per person\*

all available 5.00pm

Choose one of the following 55 minute treatments

(We would not recommend having two treatments including body massage on the same day, or similarly two treatments including facial stimulation.)



♥ P E D a sd FC LN BP

A gentle body and scalp massage inspired by Ayurveda to awaken and rebalance energies thanks to the beneficial power of massage and the regenerating effects of the sea.



a sd ♥ p12 FC BP LN D E b2

Our signature treatment begins with a warm foot compression to aid relaxation, continuing with the luxury of a stress relieving back and facial massage, incorporating a choice of hand or foot massage to truly relax and pamper the body.



a sd ♥ p FC BP LN D E

**massage** - A highly active wrap and massage that helps to firm the skin, tighten tissue and combat skin slackening, resulting in a firmed and toned body.

or

**active** - A high-performance body wrap, during which the skin is exfoliated, coupled with a head massage and application of a hydrating cream. Toxins are eliminated and skin is left feeling invigorated and remineralised.



a sd FC b2 LN b2

**radiance** - Radiance Boosting. With organic Cyfolia algae, native to Brittany, to leave the skin radiant and glowing once more.

**thirst relief** - Thirst Relief. This facial pairs high performance, organic, marine ingredients with a relaxing facial massage. The skin is hydrated, revitalised and more luminous than ever.

**soft & soothing** - Comforting & Soothing. A veil of softness for sensitive skin. This pampering treatment softens your skin leaving it soothed and ideally hydrated.



14 sd LN

A complete facial for the hands. The hands are exfoliated, cuticles are cared for with oils and creams, the nail shape is perfected and treatment basecoats and colour are applied for the perfect finish. A natural nail is required for this treatment.



14 sd LN FC D

The Mii pedicure including heated booties to soothe and relax. Feet are exfoliated and massaged, nails are cut and shaped, cuticles are treated and prescriptive basecoats and the perfect polish are applied. A natural nail is required for this treatment.



# CHRISTMAS AT THE CASTLE

Imagine a Christmas where all you have to do is sit back, relax and enjoy yourself.

## CHRISTMAS EVE

- ❄️ Start the festivities with complimentary mulled wine and mince pies on arrival around 3pm.
- ❄️ Following a swift check-in, take time to settle into your room.
- ❄️ Enjoy use of the spa facilities and optional fitness classes followed by a sumptuous three course dinner.

## CHRISTMAS DAY

- ❄️ Enjoy a leisurely breakfast and spend the morning relaxing in the Spa.
- ❄️ A light lunch is provided, followed by an optional winter stroll in the countryside.
- ❄️ Join us for a champagne reception at 6.00pm followed by a traditional Christmas Dinner served at 6.30pm with all the trimmings and complimentary wine throughout.

## BOXING DAY

- ❄️ Another leisurely breakfast is in order, followed by use of the spa facilities and join in with one or two of our fitness and relaxation classes if you wish.
- ❄️ The festivities are concluded with lunch & a fond farewell.

Rates will be announced early 2024 – join our mailing list, follow us on social media or give us a call on 01721 725300 to be advised of updates.



No treatments on Christmas Day. Transport can be arranged in advance for those who wish to attend the local church services at an additional cost.





---

# SO HOGMANAY

---

See in 2025 in style at Stobo Castle –  
“So Hogmanay” successfully combines relaxation, pampering and fun in beautiful surroundings.

## BOOK NO AND YOU CAN LOOK FOR ARD TO:

- ❄️ Two nights' luxurious accommodation (30th & 31st December 2024 or 31st December 2024 & 1st January 2025).
- ❄️ Delicious Stobo Cuisine – all meals from dinner on arrival to lunch on departure, including complimentary wine\* with the sumptuous Hogmanay Dinner.
- ❄️ Unwind in the award-winning spa facilities.
- ❄️ Brush away the cobwebs with our programme of optional fitness and aqua classes.
- ❄️ Take part in our guided country walks in the stunning Scottish landscape with full access to the Japanese Water Gardens.
- ❄️ As always, complimentary slippers and use of fluffy bathrobes are included.

The Hogmanay celebrations begin with a Welcome Reception with complimentary champagne\*, followed by live music till late provided by “Cranachan”, a fantastic 6-piece band – prepare to be entertained and dance the night away to ceilidh tunes and classic hits.

*\*Non-alcoholic alternatives are available.*

Rates will be announced early 2024 – join our mailing list, follow us on social media or give us a call on 01721 725300 to be advised of updates.







# SO STOBO WELCOME PACKS

What could be nicer than finding one of our beautifully presented 'So Stobo' Welcome Packs waiting in your room with your name on it.

Whether it's a special occasion or just a 'thank you' gift, the range of packs available will cater for all your requirements. Just choose from the following options and call **01721 725300** to place your order quoting the recipient's name and their arrival date, at least 48 hours beforehand.

## WINE & CHOCOLATE 25

- Bottle of House Wine (Red, White or Rosé)
- Bar of "So Stobo" Chocolate (85g)
- Card with personalised message



## TEDDY BEAR & CHOCOLATE 30

- Teddy bear in a "So Stobo" bathrobe
- Bar of "So Stobo" Chocolate (85g)
- Canvas Tote Bag
- Card with personalised message



## PROSECCO & CHOCOLATE 35

- Bottle of Prosecco
- Bar of "So Stobo" Chocolate (85g)
- Card with personalised message



## CHAMPAGNE & FLOWERS 70

- Bottle of Bernard Robert Reserve Brut Champagne
- Fresh Flower Arrangement
- Card with personalised message



Please note that payment for Welcome Packs is non-refundable and payment for Champagne & Flowers is requested at the time of booking.

---

# OUR COLLABORATION WITH PHYTOMER

---

Here at Stobo Castle, we have had the pleasure of working with luxury brand Phytomer for over 30 years, offering variations of their most enjoyed treatments. Since recognising the high quality of their products and long-lasting benefits of their treatments, we are now delighted to be working with Phytomer on a more exclusive basis.

Our treatment menu now includes an unrivalled range which has been tailored to our most popular choices over many years, as well as unique rituals created by Stobo's in-house Phytomer specialist.

## THE HISTORY AND PHILOSOPHY OF PHYTOMER

At Phytomer, three generations of passionate skincare experts have all had the same dream: to find ways to transform the sea into skincare.

Phytomer products are developed and manufactured in Mont Saint-Michael Bay, Brittany, using natural, organic, locally-sourced and sustainably-grown marine ingredients and recyclable, plastic-alternative packaging materials.

The sea's incredible biodiversity makes it rich in vital elements. It has an extraordinary affinity with our skin's cells and contains everything needed to restore and maintain healthy, beautiful skin. Phytomer turns the sea into skincare formulas that are renowned for their effectiveness.

Importantly, Phytomer holds an

certification, ranking it amongst the most eco-friendly companies in the world.






---


# SPA TREATMENT ADVICE

---

 We recommend advising us at the time of booking if you would like to enjoy any additional treatments by calling **01721 725300** (option 2) or emailing: **s a@stobocastle.co.uk**

 Treatments are subject to availability and payment for treatments may be settled on departure.


 We are happy to take requests for specific treatment times however all appointments are subject to availability due to therapist skills and room availability.

 On arrival, you will be given your treatment card (please check this as soon as possible) – this will show your treatment times, which may commence from 3.30pm on arrival and finish by 12 noon on your day of departure.

 Please remove all jewellery before using the spa facilities and prior to the start of your treatment.

 We endeavour to allocate the same times for guests visiting together.

 Confirmation of any additional treatments booked will be emailed in advance of your stay.

 If you have been ill or received medical treatment within the last 6 months, please consult your doctor before booking treatments (a doctors letter may be required for certain medical conditions).

 Some treatments may restrict your use of the pool and heat treatments.

 Intake of alcohol 24 hours prior to treatments should be moderated.

 24 hours notice of cancellation is required for all additional treatments, otherwise the full charge will be made.

 Treatments are suitable for 16 years and over, with the exception of Manicures & Pedicures (including Geleration) and the Relaxing Water Massage, which are available for 14 and 15 year olds.

 We have male and female therapists on the Spa Team – please advise us if either option is unacceptable.

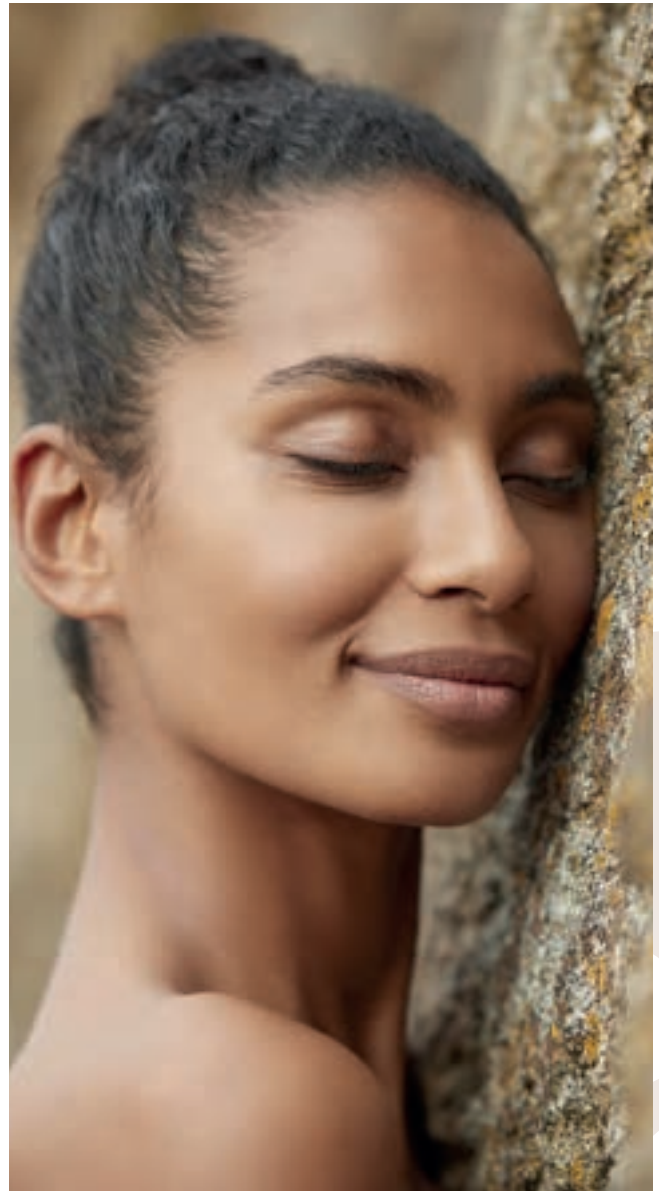
 Treatment consultation is included within the treatment timing.

## CONTRA INDICATIONS

The following contra indications are a guideline only and you may wish to discuss your suitability for a particular treatment with our highly trained Spa Team. Wherever possible, we will adapt the advertised protocol to meet your requirements.

### CONTRA INDICATIONS:

Allergies	a
Epilepsy	E
Skin Diseases	sd
Heart Problems	♥
Diabetes	D
Pre nancy - not suitable for pregnant ladies	P
Pre nancy - not suitable for those within the first 12 weeks of pregnancy	P12
Acute Mobility Issues	♿
Foot Conditions	FC
oto (within the last 2 weeks)	b2
Thyroid Active/Underactive - the treatment will be adapted	T
Suitable for Those Aged 14 and Over	14
Lymph Nodes Removed	LN
High/Low Blood Pressure	BP
Eye Infection	👁
Shellfish Allergy	S





# FACE & EYE TREATMENTS

## SUPREME YOUTH PIONNI RE

Youth Treatment

75 mins | £130 **a sd FC b2 LN**  **P T S**

An exceptional treatment giving instantly visible results. Your experience begins with a Relaxing Back Treatment followed by a facial using advanced, smoothing movements and " **t a a e lle** ", filling lines and wrinkles, encouraging the production of collagen and elastin, resulting in firmer skin that glows with renewed radiance.

## CYFOLIA ORGANIC

Radiance Boosting Facial

55 mins | £95 **a sd FC b2 LN** 

Phytomer's newest skincare line continues their commitment to preserving and protecting both the skin and the sea. Its organic Cyfolia algae, native to Brittany, leaves skin radiant and glowing once more.

## HYDRA ORIGINAL

Thirst Relief Facial with Organic Algae

55 mins | £95 **a sd FC b2 LN** 

This facial pairs high performance, organic, marine ingredients with a relaxing facial massage. It whisks us away to the seaside, thanks to its unique textures. The skin is hydrated, revitalised and more luminous than ever.

## DOUCER MARINE

Comforting Soothing Treatment

55 mins | £95 **a sd FC b2 LN** 

A veil of softness for sensitive skin. This pampering treatment softens your skin and enhances its protection system for soothed and ideally hydrated skin.

## EYE PERFECTION

Radiance Smoothing Eye Treatment

40 mins | £70 **a sd FC b2 LN** 

This specialist eye treatment targets all eye concerns. After a soothing eye mask is applied, a relaxing eye massage is performed to relieve shadows and puffiness, and smooth lines and wrinkles. This is followed by an exclusive lifting and firming mask. The treatment will leave your eyes feeling fresh, rested and soothed.



# BODY TREATMENTS

## BLISS BODY TREATMENT

55 mins | £100 **a sd ♥ P FC BP LN D E**

This blissful treatment includes an exfoliation and a luxuriously warm application of paraffin wax on the back area to soften the skin and relieve tense muscles. The ritual is then completed with a lower leg, back and neck massage.

## BODY FIRMING RAP

55 mins | £95 **a sd ♥ P FC BP LN D E**

A highly active wrap and massage that helps to firm the skin, tighten tissue and combat skin slackening, resulting in a firmed and toned body.

## MARINE BODY RAP

55 mins | £95 **a sd ♥ P FC BP LN D E**

A high-performance body wrap, during which the skin is exfoliated, coupled with a head massage and application of a hydrating cream. Toxins are eliminated and skin is left feeling invigorated and remineralised.

## MOTHER TO BE MASSAGE

55 mins | £95 **a sd ♥ FC BP D E P12**

A soothing and gentle massage is tailored to your individual needs using Phytomer's Hydra Melting Massage Gel to hydrate the skin. Suitable for those over 12 weeks of pregnancy.

## ABSOLUTE SERENITY MASSAGE

55 mins | £95 **a sd ♥ P FC BP LN D E**

A gentle body and scalp massage inspired by Ayurveda to awaken and rebalance energies thanks to the beneficial power of massage and the regenerating effects of the sea.

## SATIN SHIMMER

Salt Crystal Exfoliation

40 mins | £65 **a sd ♥ P12 FC BP LN D E**

A full body exfoliation with sea salt crystals, combined with a relaxing application of body milk that leaves your skin soft and silky.

## LEG REVIVAL

Leg Soothing Treatment

30 mins | £55 **a sd P12 FC LN D E**

A targeted treatment to comfort and relieve tired legs, as well as help restore their appearance. Following exfoliation, legs are wrapped in a refreshing gel which stimulates elimination, before carrying out a drainage massage to bring a sensation of lightness and relief. This treatment makes a lovely combination booked together with our Eye Radiance Treatment.

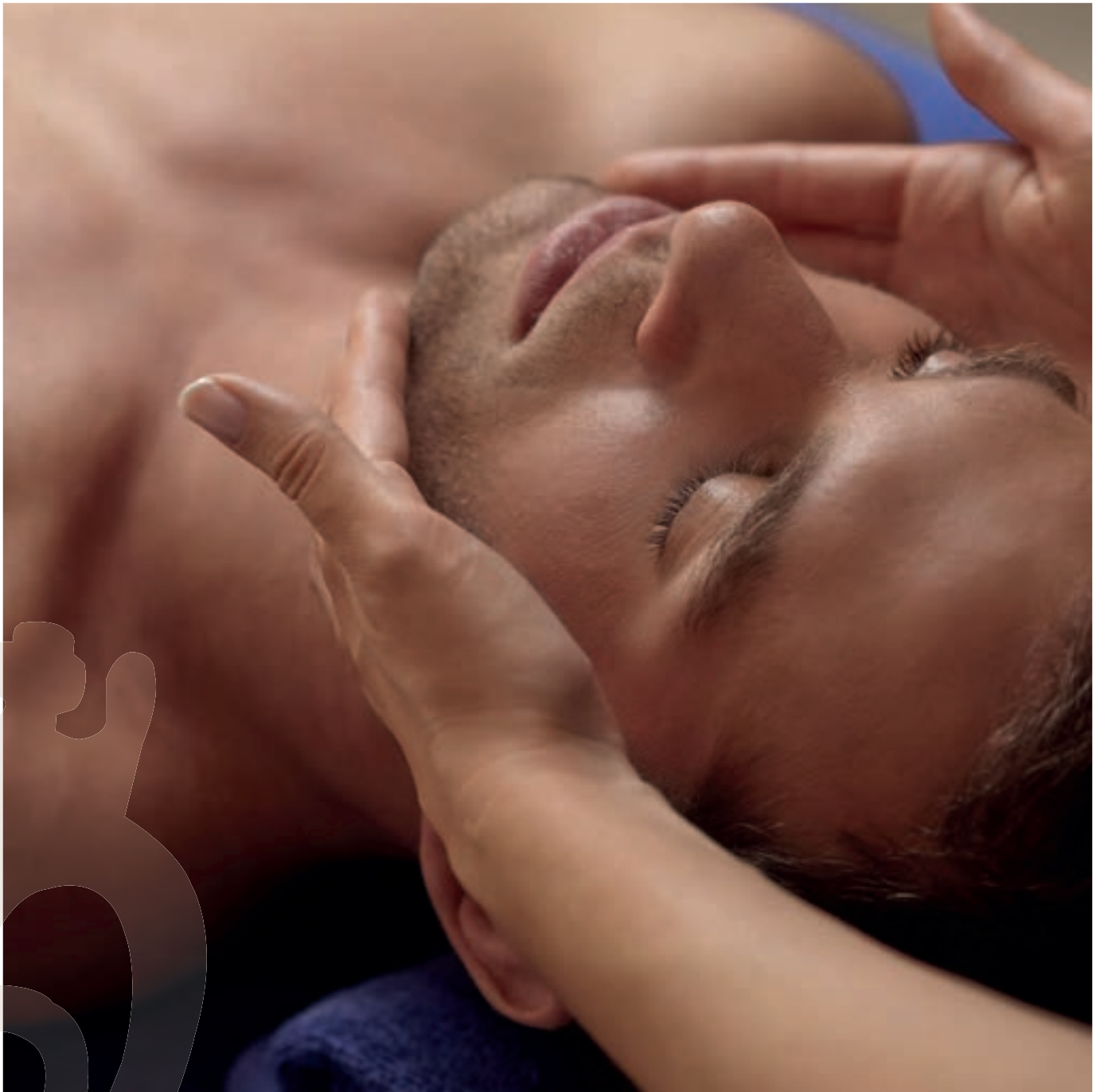
## RELAXING WATER MASSAGE

15mins | £25 **sd P LN ♿ 14**

The Relaxing Water Massage system simulates various massage patterns, except they are applied with two high pressure jets of water instead of the therapist's hands. In a 15 minute treatment, you will be massaged with approx. 2,000 litres of warm water, without getting wet! If you have any medical concerns regarding this treatment, please check with Spa Reception.







# FACE & BODY RITUALS

## STOBO SUBLIME JOURNEY

105 mins | £175 **a sd ♥ P12 FC BP LN D E 👁 b2**

Designed by Stobo's expert team of spa professionals, this treatment takes you on a whole body journey including exfoliation, relaxing back massage and a sublime facial inclusive of scalp, hand and foot massage.

## SEA HOLISTIC

Relaxing & Radiance Massage for Face & Body

85 mins | £135 **a sd ♥ P FC BP LN D E 👁 b2**

A treatment combining face and body care. Inspired by traditional Thai medicine, it uses massage techniques to create harmony between body and mind. Your body's relaxation zones are stimulated with heated muslin bolus' containing sea salt crystals and Ocean Spray lavender petals. Combining this hot thermal experience with traditional massage movements, this treatment melts away tension, restoring balance and inner warmth.

This experience includes a full body exfoliation and luxury facial to make you feel completely pampered. Awaken your senses and capture a moment in time.

## MELLO MAMA

75mins | £120 **a sd ♥ FC BP LN D E 👁 b2 P12**

The ultimate relaxation treatment for mothers-to-be and new mums. This decadent head-to-toe treatment includes everything you need to feel renewed. A full body massage will melt away aches and pains, along with a rejuvenating facial to soothe and brighten tired eyes and skin. A cooling leg and foot exfoliation and massage to finish will leave you feeling weightless and serene.

## MARINE CALM

65 mins | £110 **a sd ♥ P FC BP LN D E 👁 b2 T S**

A luxurious face and body treatment to relieve tension and stress. A subtle blend of massage oil and relaxing serum along with an application of Thermal Self-heating Mud provides a totally relaxing, yet uplifting experience.

## STOBO SIGNATURE MASSAGE

55 mins | £95 **a sd ♥ P12 FC BP LN D E 👁 b2**

Our signature treatment begins with a warm foot compression to aid relaxation, continuing with the luxury of a stress relieving back and facial massage, incorporating a choice of hand or foot massage to truly relax mind and body.

## SERAIL MUD ROOM

45mins **a sd ♥ P FC BP LN D E**

One Person - £60 | Two People Sharing - £50 each

The combination of radiant heat and the self-application of body and face muds creates a rejuvenating yet relaxing experience. The highly effective muds nourish, detoxify and invigorate the mind and body. The soothing warm temperature allows the mud to dry and the chamber then fills with herb infused vapours, with a salt scrub to follow and a warm shower to complete the experience.

# HOLISTIC TREATMENTS

## AROMATHERAPY

70 mins | £105       

A slow pressure-point massage using pre-blended oils. This luxurious treatment will ease tension, relax the body and soothe the mind. Includes the face and scalp.

## AROMASTONES

70 mins | £110       

Stone therapy concentrates on the use of warm basalt stones incorporated into traditional massage. One massage stroke with a warm stone is the equivalent to five to ten strokes by hand. The deep, penetrating heat from the stones is used to massage the body, easing the pain and tension of aching muscles and creating a sense of wellbeing. Bliss for the body, mind and spirit, hot stone massage has it all.








## REIKI

55 mins | £95

A gentle, non-invasive therapy which promotes stress reduction, relaxation and healing. Our Reiki practitioners will “channel energies” to balance and harmonise the body, working on an emotional, physical and spiritual level.

Limited availability.

## REFLEXOLOGY

40 mins | £80       

A zone therapy treatment based on the reflexes in the feet relating to each organ and all parts of the body. It is a form of foot massage using thumb pressure techniques on the reflex points on the feet.

Limited availability.

## HOPI THERAPY

55 mins | £95      

This relaxing ear candling experience promotes balance through stimulation of local energy flow, reflex points and neutral chakras of the face, followed by a head, neck and scalp massage.

Limited availability.

Due to the nature of this therapy, it is unsuitable for those with the following:

- Oil in the ear in the past 24 hours
- Perforated eardrum
- Grommets in place
- Current migraine
- Ear inflammation or infection

## INDIAN HEAD MASSAGE

40 mins | £75     

Feel your stress, aches and pains disappear with this wonderfully relaxing therapeutic experience. Head massage has been practised in India for over a thousand years and is renowned for relieving the anxiety that accumulates in the head, back and neck in everyday life. Indian Head Massage is a safe, simple, yet effective therapy which enables lymphatic drainage.





---

# MADE FOR LIFE

---

Made for Life wellness treatments provide a window of time to disconnect from daily stress and reconnect with nature and stillness. The treatments are akin to a period of meditation, allowing the body to access the para-sympathetic state where the mind and body are prompted into a 'state of allowing'. This period of time allows rejuvenation on all levels - mind, body and emotions - including a natural boost to immunity.

All Made for Life treatments use Made for Life 100% organic preparations and a range of specialised relaxation techniques. These treatments are performed by our highly skilled, cancer touch trained therapists.

## HAND ON HEART

Deeply relaxing Back, Scalp & Facial Treatment

85 mins | £135   P12

This deeply relaxing and nurturing spa ritual is suitable for all and created to help you reach a sense of deep peace and calm. Smooth, slow and rhythmic Tui Na and gentle touch is applied to the scalp, face, back and shoulders. The slow Tui Na Chinese movements rebalance and calm the upper body. The facial eases any tension held within the face and also replenishes, nourishes and revives the skin, using luxurious 100% organic oils and balms.

## SOOTHE & NURTURE

100% Organic Facial

55 mins | £95   P12

A beautiful way to restore natural luminosity to the skin, leaving you looking and feeling radiant. 100% organic balms and oils will nourish, cleanse, eliminate congestion and bring back natural balance to the skin. This deeply relaxing face and scalp massage calms the mind and soothes the soul.

## CALMING RADIANCE RITUAL

55 mins | £95  P12

Perfect for those seeking rest and rejuvenation, the Made for Life Bespoke Touch Therapy uses a relaxing sequence of slow, rejuvenating movements tailored to suit your needs.

With our organic lemongrass scrub to smooth and brighten skin, followed by a nourishing application of 100% organic oils including a massage to the face and scalp, this treatment brings a deep sense of restorative calm.

## CATCH THE BREATH

Soothing Back and Scalp Treatment

35 mins | £65  P12

Perfect for those who simply want some time out to 'catch the breath', this nurturing back, head and shoulder ritual will help you to gently drift away and relax. Using slow, soothing and nurturing touch therapy with 100% organic oils and balms brings you a deep sense of calm and relaxation.

# MANICURES & PEDICURES

When it comes to natural nails, Mii Cosmetics is considered a world leading brand, with a range of Mii nail products to achieve and maintain naturally beautiful nails.

## MII PRESCRIPTIVE MANICURE DELUXE INCORPORATING THE LEREMEDI BY MII HAND TREATMENT PROGRAMME

55 mins | £65 **14** **sd** **LN**

The Mii Prescriptive Manicure but also including the LeRemedi by Mii Hand Treatment Programme – a complete facial for the hands. Hands will feel softer, smoother, firmer and more attractive. The ultimate in hand and nail care. A natural nail is required for this treatment.

## MII PEDICURE DELUXE WITH THERMAL BOOTIES

55 mins | £65 **14** **sd** **LN** **FC** **D** **P12**

The Mii pedicure including heated booties to soothe and relax and a complete foot and leg treatment up to the knee. A natural nail is required for this treatment.

## MII PRESCRIPTIVE MANICURE

40 mins | £55 **14** **sd** **LN**

Nails are not alike... a treatment manicure which analyses and treats each nail for its specific nail type. The hands are exfoliated, cuticles are cared for with oils and creams, the nail shape is perfected and treatment basecoats and colour are applied for the perfect finish. A natural nail is required for this treatment.

## MII PEDICURE

40 mins | £55 **14** **sd** **LN** **FC** **D** **P12**

Holistic foot and nail treatment to treat every nail type. Feet are exfoliated and a L'Oréal S'assise leaves feet smooth and soft. Nails are cut and shaped, cuticles are treated and prescriptive basecoats used for different nail types... always finishing with the perfect polish. A natural nail is required for this treatment.



\* These treatments include a complimentary bottle of Mii nail polish of your choice.



---

# MII GEGERATION

---

Mii Geleration is a strong yet light application of “soak-off” gel polish, giving a beautiful, natural look to a long-lasting manicure or pedicure. The treatment offers total protection for the nails, allowing them to grow with a chip resistant polish for a three week extended wear and a high gloss finish.



## MII GEGERATION MANICURE

55 mins | £65 **14** **sd** **LN** **P12**

Following a consultation, the hands are exfoliated, cuticles treated and the nails are trimmed and filed. The application of gel polish completes the treatment. Please note a natural nail is essential for applying the gel.

## MII GEGERATION PEDICURE

55 mins | £65 **14** **sd** **LN** **D** **P12**

Following a consultation, hard skin is removed from the feet and they are soaked in a blissful bath. The feet are then exfoliated using a Purifying Enzyme Scrub, the cuticles are treated and the nails are trimmed and filed. The application of gel polish completes the treatment. Please note a natural nail is essential for applying the gel.

---

# SO STOBO SO FIT

---

## EXERCISE STUDIO

We offer a wide and varied schedule of complimentary classes including Total Tone, Aquafit, Yoga and Pilates as well as something more energetic like Kettlebells and dance classes, at no extra cost.

Visit [www.stobocastle.co.uk/stobo-fitness-schedule](http://www.stobocastle.co.uk/stobo-fitness-schedule) / to view our schedule\*.

For those who prefer the great outdoors, join us for our daily, guided three mile walk in the beautiful Stobo countryside.

\*Subject to change.

## GYM

Visit our state-of-the-art gym where the Queenax functional rig takes centre stage in the training area, designed to support the fitness goals of our guests and members.

The recent launch of the revolutionary Peloton Bike has enhanced our indoor cycling offering – benefits include live or on-demand studio classes anytime, a sweatproof 22" HD touchscreen, compatible with Wi-Fi or Bluetooth™ enabled devices and a variety of classes ranging from 5 to 90 minutes to suit your mood and goals.

For more information on fitness classes or if you would like to request a specific class or 1-1 tuition, please call **01721 725300** and talk to a member of the Fitness Team or email [gym@stobocastle.co.uk](mailto:gym@stobocastle.co.uk).

## BODY COMPOSITION ANALYSIS

15 mins | £10pp

This includes weight, body fat percentage, hydration levels, metabolic age, visceral fat rating, Body Mass Index and physique rating.

Minimum age 18. Not suitable for those with a pacemaker.





---

# TERMS & CONDITIONS OF BOOKING

In these conditions "the Company" means Stobo Castle Health Spa Ltd and "the guest" means each and every person named on the booking confirmation.

---

## 1. TREATMENTS AND FITNESS SESSIONS:

All treatment and fitness sessions are subject to availability. The Management of Stobo Castle reserves the right to cancel/substitute treatments and fitness sessions in the event that they are unable to fulfil the customers original request.

## 2. BOOKING:

No provisional booking applications can be made. The full charge for a Spa Day and deposit of £100 per person for a residential booking are payable at the time of booking. No firm booking contract exists until the Company has issued confirmation of the booking.

## 3. PRICE & PAYMENT:

The price is specified in the published price list and includes accommodation, all meals and amenities as detailed. The price includes Value Added Tax at the rate applicable on the day of arrival. Cheques supported by current Bankers card and Mastercard, Visa and Switch cards are accepted.

## 4. GRATUITIES:

We believe that all our staff, including those behind the scenes help to contribute to the service we provide and therefore gratuities are distributed evenly and in full. For ease of payment of gratuities, all accounts will be subject to an optional charge of 5% based on room fees and additional treatments only and is capped at £25 -this may be removed or amended upon request.

## 5. CANCELLATION BY GUESTS:

Provided the cancellation is effected at least 7 days before the day on which the stay was due to commence, a full deposit refund will be made. If the cancellation is effected less than 7 days before the day on which the stay was due to commence, the Company will be entitled to retain the deposit. If the booking is made within 7 days before the day on which the stay was due to commence and subsequently cancelled, the Company will be entitled to retain the deposit. Where a full refund is due on cancellation, this will be offered in the form of a gift voucher which is valid for 12 months. To avoid cancellation losses, guests are recommended to take out insurance against cancellation.

## 6. CANCELLATION BY THE COMPANY:

The Company cannot accept liability for cancellation due to circumstances outside the control of the Company. If such circumstances arise the Company reserves the right to cancel the contract and refund

all sums paid by guests or offer other such alternative accommodation as may be available.

## 7. VALUABLES:

Guests who bring valuables such as jewellery, do so entirely at their own risk. Complimentary safe deposit facilities are provided for your use. Guests are strongly advised to ensure, in their own interests, that all valuables, whether or not kept in the safe deposit facilities provided, are fully and properly covered by your own personal insurance.

## 8. EXCLUSIONS:

The Company cannot accept responsibility for any damage or injury or inconvenience caused to guests during their stay at the Castle except to the extent that such damage, loss, injury or inconvenience arises as a result of negligence of the Company or its servants or agents.

## 9. LOST PROPERTY:

Any unclaimed lost property will be held on site for one month. Following this period, it will be distributed to charity.

## 10. GENERAL:

In the unlikely event of any guests having a complaint or claim this must be notified to the Company in writing within 28 days of departure. Children under the age of 14 and pets are not permitted at the castle except assistance dogs. Children over the age of 14 must be accompanied by an adult aged 18 or over. Please note that guests are liable for any damages. Liability for all charges will not be waived and group leaders will be held personally liable in the event that any previously indicated account payer, be that a person, company or association, fails to pay for any part or the whole of any charges. Stobo Castle will debit guests' credit or charge card (the details of which are given to Stobo Castle) in payment for any charges incurred whether or not identified prior to or after departure. Guests must agree to the advice given by members of staff and understand that all treatments and facilities used are undertaken at the guests' own risk. Stobo Castle cannot accept responsibility for any injury unless caused by negligence or breach of duty on the part of the Company or its' employees.

No personalised logo attire, party balloons or banners are permitted in public areas within the castle. Only food & beverages purchased from Stobo Castle may be consumed in public areas.







S C H S P S EH45 8NY  
T : 44 0 1721 725300 . . . . .